

PRODUCTS CATALOGUE

"AT EASE IN YOUR CONSTRUCTION SITE"

www.ritmo.it





Ritmo meets all your welding needs in your jobsite



The information and photos in this publication are not binding and RITMO S.P.A. is free to make any alterations without prior notice.

A DVANTAGE

RITMO



RITMO WORLDWIDE

Ritmo has professional distributors and resellers all over the world. Our staff is ready to assist you in English, Spanish, French, German, Arab, Italian, Russian and Portuguese.

TRAINING

From many years now, we have decided that the best way to grant a client/distributor a perfect knowledge of our products is to invest in custom training, in our own premises. These courses are aimed to teach how to operate the products in the best way, and how to supply the "first aid" when necessary.

PRESALES TECHNICAL ASSISTANCE

When a client or a potential client wants to buy us a product, it is our standard procedure to help find the best solution to its needs.

GLOBAL ADVICE

In such a technical field as ours, the customer requires the best assistance. Thanks to the experience developed along the years, and to the co-operation with several manufacturers, institutions, schools and training institutes, RITMO is able to give the most comprehensive advice to no matter which related issue. Our company is a long-time member of a UNIPLAST's (UNI-Italian National Plastics Standards Body) working group dedicated to the study and draw up of new standards within our field. The importance of this group is linked to the fact that the expansion of the plastic welding field ought to be followed by a crescent sensitivity for safety issues, so to have a sustainable and continuous growth. The working group prepares draws, hence present them to the UNI to be discussed and eventually transformed into new standards.

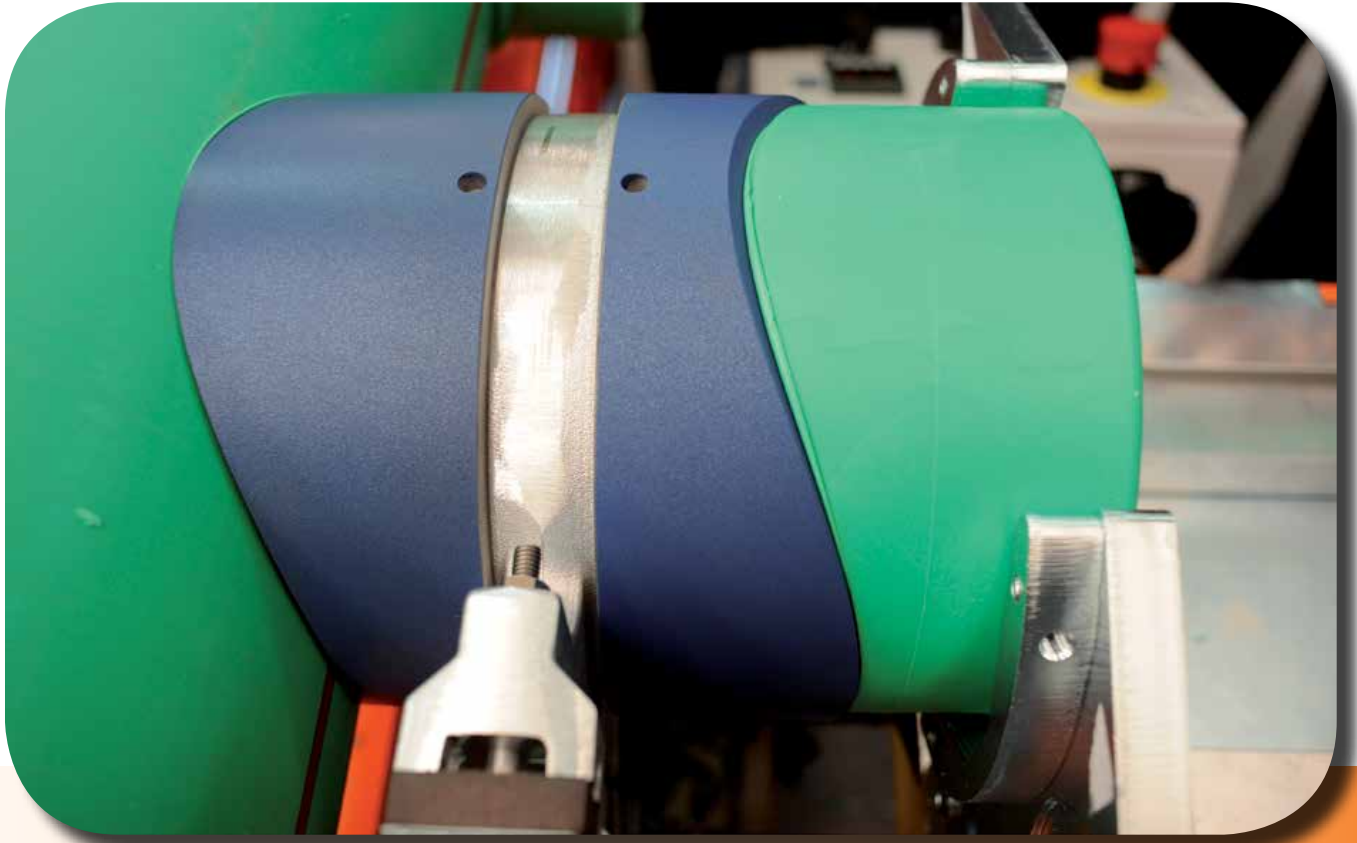
AFTER SALES TECHNICAL ASSISTANCE

Ritmo's Service Centre can solve all kind of technical issues, as well as overhaul our machines. Ritmo has other Service Centres abroad, linked to its official distributors.

STARTING AND TESTING

RITMO' technicians are prepared to make the starting and testing of workshop machines at the client' own premises, so that the fittings production can start almost immediately.

SOCKET WELDERS

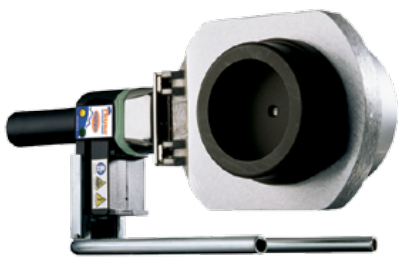


MANUAL EQUIPMENT	WORKING RANGE Ø mm	16	20	25	32	40	50	63	75	90	110	125
	R 25	16	20	25								
	R 63	16	20	25	32	40	50	63				
	R 125 Q	16	20	25	32	40	50	63	75	90	110	125
	WORKING RANGE Ø mm	16	20	25	32	40	50	63	75	90	110	125

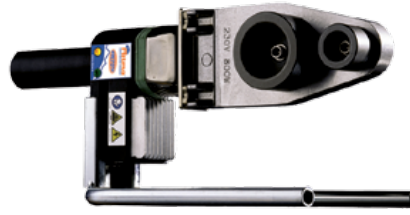
SOCKET FUSION MACHINE	WORKING RANGE Ø mm	20	25	32	40	50	63	75	90	110	125
	PRISMA JIG	20	25	32	40	50	63				
							63	75	90	110	125
	PRISMA 125 LIGHT	20	25	32	40	50	63				
							63	75	90	110	125
	PRISMA 125		25	32	40	50	63	75	90	110	125
WORKING RANGE Ø mm	20	25	32	40	50	63	75	90	110	125	

 ON REQUEST

SADDLE SOCKET FUSION MACHINE	WORKING RANGE Ø mm	
	PRISMA UP 90	MAIN PIPE 63 ÷ 250 mm SADDLE FITTING 20 ÷ 90 mm
	FM 630-125	MAIN PIPE 50 ÷ 630 mm SADDLE FITTING 20 ÷ 125 mm



R 125 Q



R 63



R 25

MANUAL EQUIPMENT

Manual SOCKET welders for joining pipes and fittings, in compliance with the standards in force. They feature an aluminum heating plate and a practical, heat-insulated plastic handle. They can weld HDPE, PP, PP-R, PVDF pipes and fittings, and they're characterized by different shapes and working ranges, suitable for different applications. They're available with an adjustable electronic thermoregulator (TE), or with a fixed electronic thermostat (TFE).

This new TFE control system features a new self-diagnostic device, provided with an alarm, which would alert the operator in case of anomaly; at the same time, the heating element would switch off automatically. Thanks to an algorithm PID microcontroller, combined with a platinum sensor, the temperature control system can react faster to the external temperature fluctuations, and guarantee higher reliability and longer durability.

STANDARD COMPOSITION

- Socket welder
- Fork support
- Bench vice (except R 25)
- Allen wrench
- Pin for sockets & spigots

ON REQUEST

- Bench vice (for R 25)
- Sockets and spigots (male/female)
- Carrying case in electro-painted steel
- R 63 Insulated bag



TECHNICAL FEATURES

TYPE: TE, TFE	R 25	R 63	R 125 Q
Working range	up to \varnothing 25 mm	up to \varnothing 63 mm	up to \varnothing 125 mm
Materials	HDPE, PP, PP-R PB, PVDF	HDPE, PP, PP-R PB, PVDF	HDPE, PP, PP-R PB, PVDF
Power supply (TE)	230 V S. Ph. 50/60 Hz	110V / 230VS. Ph. 50/60Hz	110V / 230VS. Ph. 50/60Hz
Power supply (TFE)	110 V S. Ph. 50/60 Hz 230 V S. Ph. 50/60 Hz	110 V S. Ph. 50/60 Hz 230 V S. Ph. 50/60 Hz	110 V S. Ph. 50/60 Hz 230 V S. Ph. 50/60 Hz
Max. absorbed power	500 W	800 W	1400 W
Working temperature	260° C (\pm 10° C) TFE 500° F (\pm 50° F) TFE 180° ÷ 290° C TE 356° ÷ 554° F TE	260° C (\pm 10° C) TFE 500° F (\pm 50° F) TFE 180° ÷ 290° C TE 356° ÷ 554° F TE	260° C (\pm 10° C) TFE 500° F (\pm 50° F) TFE 180° ÷ 290° C TE 356° ÷ 554° F TE
Ambient temperature	-5° ÷ 40° C (23° ÷ 104° F)	-5° ÷ 40° C (23° ÷ 104° F)	-5° ÷ 40° C (23° ÷ 104° F)
Weight	1,44 Kg (3.1 lb)	1,82 Kg (4 lb)	3,16 Kg (7 lb)
Dimensions	115 x 50 x 320 mm 4.5" x 2" x 12.6"	175 x 50 x 360 mm 6.9" x 2" x 14.1"	175 x 50 x 395 mm 6.9" x 2" x 15.5"



**Ritmo**
PLASTIC WELDING TECHNOLOGY



The information and photos in this publication are not binding and RITMO S.P.A. is free to make any alterations without prior notice.



RITMO S.p.A.

Via A. Volta, 35/37 - 35037
Bresseo di Teolo (PADOVA) ITALY

Ph. +39 049 9901888
Fax +39 049 9901993

info@ritmo.it
www.ritmo.it

